

GSM Solutions Catalog



Company Profile

Established in 1987, AdvanceTec Industries has become a global leader in the design and manufacturing of solutions for the wireless telecom, two-way radio, and thermal imaging industries. From its fully integrated, state-of-the-art 40,000 sq. foot facility in Miami, Florida, the company manufactures innovative AdvanceTec-branded, private label and OEM solutions for a variety of organizations and corporations worldwide.

AdvanceTec clientele ranges from major cellular phone network providers, metropolitan area police forces, firefighters and EMS teams to Fortune 500 companies. The company's specialized product categories include Cellular and Push-To-Talk (PTT) In-Vehicle and Fixed Base devices, GPS tracking solutions and Desk-Top Console solutions.



AdvanceTec's products are proudly made in the USA. While many electronic manufacturers have moved their production overseas to take advantage of lower labor costs and cheaper production costs, AdvanceTec continues to keep the manufacture of its products in the United States. This is done with the view of providing jobs at its highly automated manufacturing facility in Miami Florida, and maintaining strict quality controls.

AdvanceTec is a trademark of AdvanceTec Industries, Inc. All other trademarks or service names are the property of their respective owners.

Phone or batteries not included.

Product Index

GSM Solutions

AdvanceMobile™	3-4
AdvanceMobileGPS™	5
Hands-free Car Kit	6-7
AdvanceCommunicator™	8-9
AdvanceCall™ Box	10
AdvanceCALLBox Xtreme™	11
Battery Chargers	12-16
AdvanceBlue™	17
Console Control Audio Switch ..	18-19
AdvanceAudio Products	20-24
Accessories	25

AdvanceMobile™ eX1 (PTT)



REPLACEMENT SOLUTION FOR LMR
The Perfect Land Mobile Radio Alternative



NEW PRODUCT AVAILABLE SOON

AdvanceTec AdvanceMobile™ eX1 (PTT + Cellular Calls + Text Messages) Standalone in-vehicle communications unit

Kit No. ATT3555A

The AdvanceMobile™ eX1 is a robust push-to-talk vehicle mounted solution designed to operate on the GSM network. The eX1 is a highly reliable solution, and serves as an alternative to 'trunking' mobile radio systems available in the market today.

Features

- + Four line, high brightness LED LCD display designed to operate under direct sunlight
- + Allows communication to up to 99 pre-set dispatch numbers (or groups)
- + Send pre-set text messages to up to 99 numbers
- + Receive text messages
- + Enables incoming and outgoing interconnect calls
- + Loud speaker operation up to 10-watt of clear audio
- + Antenna reception readout
- + Group and individual channels readout
- + Data messages readout
- + Allows group and individual name customization
- + Group settings updated over the air

Optional

- + GPS Tracking
- + Push-to-Talk [emergency] button
- + Palm microphone
- + Gooseneck microphone
- + 20-watt audio



Emergency Button



Palm Mic



GPS Antenna

AdvanceMobile™ VX1

REPLACEMENT SOLUTION FOR LMR
The Perfect Land Mobile Radio Alternative



AdvanceTec AdvanceMobile™ VX1 (Cellular Calls) Standalone in-vehicle communications unit

Kit No. ATT3501A

The AdvanceMobile™ VX1 is a standalone vehicle mounted solution designed to operate on the GSM network. The VX1 is a highly reliable solution, and serves as an alternative to 'trunking' mobile radio systems available in the market today.

Features

- + Standalone vehicle mounted communications solution
- + Send pre-set text messages to up to 10 numbers
- + Communicate with up to 10 pre-set telephone numbers

Optional

- + GPS Tracking
- + Push-to-Talk [emergency] button
- + Palm microphone
- + Gooseneck microphone
- + 20-watt audio



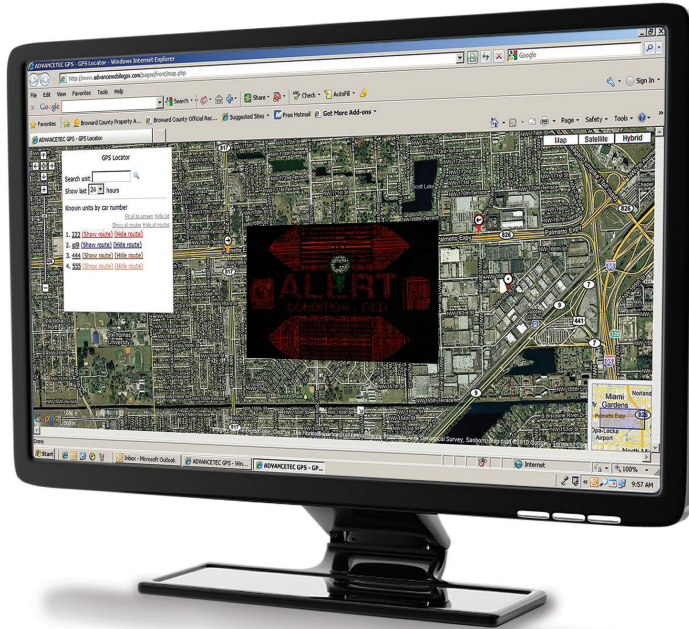
Palm Mic



GPS Antenna



Emergency Button



**NEW PRODUCT
 AVAILABLE
 SOON**

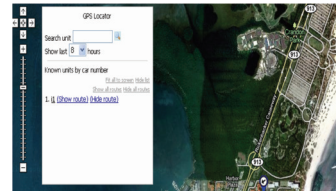
AdvanceMobileGPS™

Part No. ATT3562A

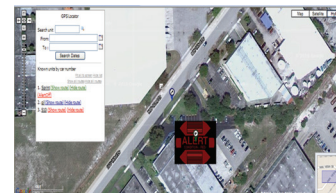
The AdvanceTec tracking software is a proprietary web-based tracking system that enables AdvanceMobile™ customers to track their assets anywhere for a nominal monthly fee. Users will log-in securely to the AdvanceMobileGPS website* and will get real time speed, idle time, and route information of the asset being tracked. It offers GPS tracking with hands-free audio, fleet tracking, color-coded vehicle identification, flexibility to select MPH/KPH and GPS download intervals, daily historic activity up to the past 24 hours.

An easy-to-use, reliable GPS device that also provides audio. GPS tracking requires a monthly connection fee with AdvanceTec.

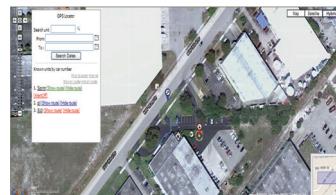
*Log-in at: www.AdvanceMobileGPS.com



Tracking
 Route optimization and reduce mileage costs



Emergency Alerts
 Drivers communicate instantly in case of emergency



Geofencing
 Alerts when vehicles leave a set area

Hands-Free Car Kit



AdvanceTec Car Kit for the **Samsung Rugby PRO™** PTT Phone

Kit No. ATT6310A

The AdvanceTec Hands-free Car Kit solution comes equipped with a Junction/Brain Box Controller, 10-Watt External Speaker, Noise Canceling Visor Microphone, PTT Remote Control Button and Wiring Harness.

Accessories available: Privacy Handset and Palm Microphone. See page 25.

Features

- + PTT and Cellular calls
- + Power from 12VDC- 24VDC
- + Loud and clear audio via 10-watt speaker and noise cancelling visor microphone
- + Secure cradle provides protection and safety while operating your phone
- + Remote push-to-talk control button
- + Fast battery charger



AdvanceTec Car Kit for the SONIM® PTT Phone

Kit No. ATT6301A (without the lock)

Kit No. ATT6302A (as shown with the lock)

The AdvanceTec Hands-free Car Kit solution comes equipped with a Junction/Brain Box Controller, 10-Watt External Speaker, Noise Canceling Visor Microphone, PTT Remote Control Button and Wiring Harness.

Accessories available: Privacy Handset and Palm Microphone. See page 25.

Features

- + PTT and Cellular calls
- + Power from 12VDC- 24VDC
- + Loud and clear audio via 10-watt speaker and noise cancelling visor microphone
- + Secure cradle provides protection and safety while operating your phone
- + Remote push-to-talk control button
- + Fast battery charger

AdvanceCommunicator™



AdvanceCommunicator™ for the SONIM® Cellular and PTT Phone

Part No. ATT3084A

The AdvanceCommunicator™ converts the SONIM™ Push-to-Talk phone into a convenient standalone desktop base station handset. A built-in rapid charger ensures that the docked phone is ready for use when removed from the docking cradle. Incoming and outgoing dispatch or incoming cellular phone communications can be recorded onto an external recording device or computer via the 3.5mm socket on the back of the unit.

Features

- + Convenient Desktop operation
- + Cellular or Push-to-Talk mode
- + Talk hands-free or use handset for private conversations
- + PTT button on back of handset and on base unit
- + Recording function for both Cellular and PTT calls



AdvanceCommunicator™ for the **Samsung PRO™** Cellular and PTT Phone

Part No. ATT3001A

The AdvanceCommunicator™ converts the Samsung PRO™ Push-to-Talk phone into a convenient standalone desktop base station handset. A built-in rapid charger ensures that the docked phone is ready for use when removed from the docking cradle. Incoming and outgoing dispatch or cellular phone communications can be recorded onto an external recording device or computer via the 3.5mm socket on the back of the unit.

Features

- + Convenient Desktop operation
- + Cellular or Push-to-Talk mode
- + Talk hands-free or use handset for private conversations
- + PTT button on back of handset and on base unit
- + Recording function for both Cellular and PTT calls

AdvanceCall™ Box



NEW PRODUCT
**AVAILABLE
 SOON**

AdvanceCall™ Box System

Part No. ATT8553BBU-A (with back-up battery)

The AdvanceCall™ Box is a fixed wireless indoor cellular device system with one-touch single number dialing which requires ONLY activation onto the GSM network; no additional phone is required. It is simple to install or relocate, requiring only 4 screws and an AC power outlet. A High-gain antenna (included) provides improved reception in low cellular service areas. Currently being deployed in many locations including banks, schools, offices and money transport vehicles. An external Yagi antenna can be added to assist with in-building coverage issues.

Advance**CALL**Box Xtreme™

NEW PRODUCT
**AVAILABLE
SOON**

Advance**Call**™ Flush Mount Xtreme™

Part No. ATT8556A

The AdvanceTec Flush Mount Xtreme™ is a weather proof flush mountable emergency call box which only requires AC power and activation onto the GSM network. Built-in speaker and microphone allow simple and easy full duplex conversation.

Features

- + One-touch number dialing
- + Requires activation on the GSM network
- + Quick and easy to deploy
- + Weatherproof housing
- + Visual flashing light indicator



NEW PRODUCT
**AVAILABLE
SOON**

Advance**Call**™ Standalone Xtreme™

Part No. ATT8557A

The AdvanceTec Standalone Xtreme™ is a robust, weatherproof emergency call box which only requires AC power and activation onto the the GSM network. Equipped with a flashing warning blue light and built-in speaker and microphone, allowing simple and easy full duplex conversation.

Features

- + One-touch number dialing
- + Requires activation on the GSM network
- + Quick and easy to deploy
- + Weatherproof housing
- + Visual flashing light indicator



BatteryChargers



Single Bay Battery Charger

Part No. ATT1012A LI (SONIM)
 Part No. ATT1013A LI (Samsung Galaxy PRO)
 Part No. ATT1014A LI (Samsung Rugby III)
 Part No. ATT1015A LI (Samsung Galaxy S3)

**Consult AdvanceTec for specific battery plates to match your current batteries.*

The AdvanceTec single bay battery charger is designed as an interchangeable battery adaptor plate to allow the charging of different phone batteries on the AdvanceTec Single Bay AC/DC battery charging system. The "snap on/snap out" feature allows the battery adaptor plate to be easily removed and replaced with other single bay battery charger plates available from AdvanceTec.

Features

- + Supports the phone's Li-Ion batteries
- + Rapid charge
- + Batteries can be charged or topped up at anytime
- + Use as desktop or in-vehicle
- + Switches to maintenance mode when fully charged
- + LED indicators give battery charging status

Supports home/office and in-vehicle use

(supplied by AdvanceTec)



Part No. ATT9972A



Part No. ATT9970A



12 Bay Battery Charger

As shown with 6 SONIM and 6 Samsung Galaxy Pro Batteries

**Consult AdvanceTec for specific battery plates to match your current batteries.*

The AdvanceTec 12 Bay Lithium-Ion Battery Charger is designed to support most Li-Ion rechargeable batteries. With the increasing mobility of today's workforce and the popularity of handset applications, the need to have ready-to-go optimized charged batteries has become a business necessity. The AdvanceTec 12 Bay Li-ion Battery Charger has been designed with interchangeable plates to enable the charging of different sized batteries, eliminating the need for multiple chargers.*

Features

- + Supports the phone's Li-Ion batteries
- + Rapid charge
- + Batteries can be charged or topped up at anytime
- + Use as desktop or in-vehicle
- + Switches to maintenance mode when fully charged
- + LED indicators give battery charging status

BatteryChargers



AdvanceCharge™ 6 Bay Drop-in for the SONIM® Phone

Part No. ATT6028A

AdvanceTec's 6 Bay SONIM™ Phone Charger is designed to support up to six phones at a time. Replace the battery covers supplied by AdvanceTec, and simply snap the phone into the custom pocket to charge according to manufacturer's specifications. The LED indicator will turn from BLINKING green <<charging>> to SOLID green when <<fully charged>>.

Features

- + Use as desktop or in vehicle
- + Weight 18 lbs.
- + Dimensions 10.50" x 6.6" x 18" (W x H x D)
- + Input voltage 110/220 VAC
- + Heavy-duty, robust aluminum construction withstands rugged use



The Battery Cover* must be replaced

Part No. ATT8445A

*6 custom battery covers with exposed charging contacts supplied by AdvanceTec for convenient, automatic charging



In-vehicle Charging Cradle for the SONIM® Phone

Part No. ATT6303A (as shown)

Part No. ATT6304A (with the lock)

The AdvanceTec SONIM custom designed Mobile Charging Cradle provides a safer and convenient charging holder for the SONIM phone in the vehicle. It is supplied with charging junction box to supply rapid & accurate charge to the phone.



AdvanceCase™ Charger

As shown with 6 SONIM and 6 Samsung Galaxy Pro Batteries

**Consult AdvanceTec for specific battery plates to match your current batteries.*

The AdvanceCaseCharger™ is a versatile and robust charger fitted into a waterproof, dust-proof and crushproof carrying case. It is ideal to meet any emergency situation requiring battery charging needs on the go. Can be powered off from power point in the vehicle or 100-240VAC with an optional extra power supply available.

Supports batteries for the SONIM, Samsung Rugby PRO, Galaxy S3, and more.

Features

- + Rugged protective case made of lightweight rugged HPX® Resin with double layered soft grip handles and double pad lockable clasps
- + Can be connected to suitable Solar Power Panel
- + Interchangeable adapter plates enable the charging of different model batteries on the same base
- + Powered off 12-24 VDC with in-vehicle power cable supplied or 100-240VAC with an optional extra power supply available

BatteryChargers



64 Pocket Advance Multi-Bay Charger™ for the SONIM® Phones

Part No. ATT1101A

Standalone charging tower that will simultaneously charge up to 64 of your SONIM phones. LED indicators will let you know which phones are being charged and which are fully charged and ready to go. The durable, heavyweight construction will provide years of use. Upgradable phone pocket.

Features

- + Charge up to 64 phones at the same time
- + Will charge the phone battery as per the phone specifications
- + Will never overcharge the battery
- + Fits into a standard 19" rack size spacing
- + Durable design for longer life

AdvanceBlue™



The AdvanceBlue™ Commercial Bluetooth Hands-Free Kit

Kit No. ATT8000A

A pioneer in hands-free technology, AdvanceTec offers a robust commercial Pro-Installed Bluetooth Hands-Free Kit. Now first responders from major metropolitan areas to industrial fleet operators can benefit from the comfort, convenience, reliability of Bluetooth wireless technology and not loose sound or transmission quality.

Supplied with a 4" screen monitor where you can read incoming text messages, load the phone book from the phone, and which is easily accessed by a wired remote "mini" mouse. Store up to 28 of your most frequently called numbers into "Turbo" dial for easy one button dialing. Sync up to 5 Bluetooth enabled phones to the kit and connect an optional extra rapid charger cable, to ensure that your phone is always fully charged.

Control Switch Box

AdvanceTec Audio/Data Control Switch

Part No. ATT8450A

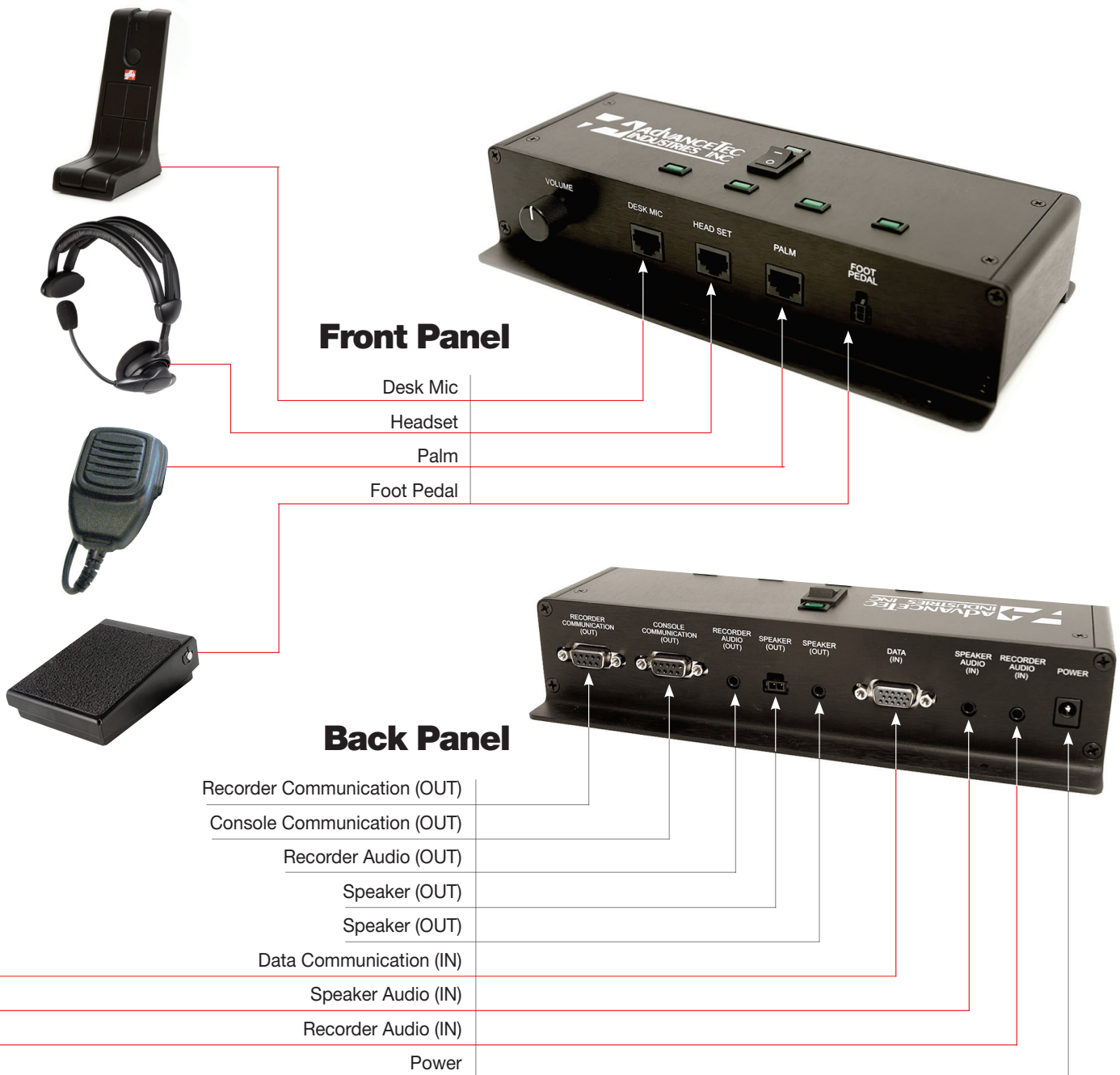
The AdvanceTec Audio/Data Control Switch is a versatile and compact solution that allows the control of the audio volume and seamless connection and integration of multiple accessories into a console interface. It is designed to enhance the features of the AdvaceCommunicator™ Desktop and a Dispatcher Console, or each unit separately. It enables the connection of a Desktop Microphone with PTT; External speaker, Headset with PTT; PTT Foot Pedal; Palm Microphone; External recording device as well as provides a Data Port interface connection.

The AdvanceTec Audio/Data Control Switch can be used in 2 audio control modes:

- + With a Desktop Microphone (with PTT) together with external speaker.
- + With Headset and PTT Foot Pedal – More suited to a dispatch center environment.



Data Communication (Out)
 Speaker Audio (Out)
 Recorder Audio (Out)



AdvanceAudio™ Products



The AdvanceRSM™

Designed to connect directly to the audio port of the phone

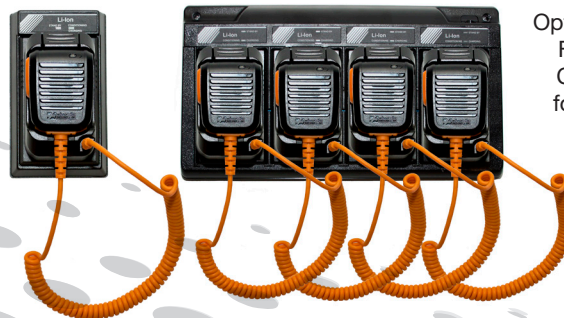
The AdvanceRSM™ boasts a bold and rugged contemporary look. Supplied with a 360 degree rotatable clip to affix it to the lapel straps or jackets, as well as 3.5mm audio socket to support a wired ear piece.

The AdvanceRSM™ is powered by an internal rechargeable 1300 mAh lithium-ion battery which will keep the RSM independent of the phone battery. It provides approximately 30 days of standby time & 8 hours of talk time. It features a multicolor LED charging status and a low-battery level status indicator.

The AdvanceRSM™ battery can be charged either via the USB socket or through the standalone Single or 4 Bay drop-in chargers available from by AdvanceTec. The chargers support home/office desktop (AC) or in-vehicle (DC) use. The battery can be easily replaced when necessary with the removal of 1 screw.

Features

- + Push-to-talk over cellular functionality
- + Large, easy-to-access PTT button
- + Micro USB compatible charging
- + 3.5mm audio socket for wired ear piece for privacy communications
- + Multicolor LED battery indicator
- + Supports home/office desktop (AC) or in-vehicle use (DC)



Optional Single and Four Bay Drop-in Charger available for rapid charging



AdvanceTec Headset with PTT Mic for **SONIM**® and **ANDROID**™ Phones

Part No. ATT8436A (SONIM) | Part No. ATT8437A (Android)

The AdvanceTec Over-the-Ear Headset with in-line Push-to-Talk mic is designed for use with Android™ phones. The earpiece features a D-loop, over-the-ear design that rests snugly on either ear. It delivers great sound clarity even in noisy environments, while allowing the user to receive calls discreetly in low-noise settings. Unlike ear-canal earbuds, this new design will not block hearing, which makes it unsafe under working conditions.

Features

- + Discreet and secure D-loop style earpiece
- + PTT housing clips to lapel or collar for ease of use
- + Sleek design provides excellent stability and communications quality
- + Uses a coin-cell type battery (CR2032) that is easily accessible in the market for the end-user
- + For use in security, retail, real estate, hospitality, and public safety – where seamless coordination matters



Push-to-Talk Throat Mic

Part No. ATT8423A

The AdvanceTec Throat Microphone is designed for use with PTT phones with vibration sensors (transponders) to pick up skin vibration signals from the vocal cords when talking rather than air vibration signals from the mouth and environment. This will almost totally eliminate background noise and echoes. A transparent acoustic tube to the ear provides for privacy and clear reception, even in a noisy environment. A remote PTT button and finger Velcro strap provides for easy and discreet use.



Push-to-Talk Headset Heavy-duty Headset with Boom Mic and PTT

Part No. ATT8420A (with 2.5mm plug)

Part No. ATT8421A (with RJ45 connector)

The Push-to-Talk Headset provides audio to the one ear with the over-the-head headset, leaving the other ear clear. Available with a 2.5mm plug to connect directly into the phone or RJ45 connector to plug into the AdvanceCommunicator™. Can be used in conjunction with the PTT Foot Pedal.

AdvanceAudio™ Products



Desktop Microphone

Part No. ATT8350A

The AdvanceTec Desktop Microphone is designed to be used with the AdvanceCommunicator™, a device that converts your cellular handset into a communications console tool. The Desktop Microphone features a sleek exterior offering an ideal solution for dispatch and transportation users. It provides convenient Push to Talk (PTT) and microphone on the desk. It is sturdy and easy to operate.

Features

- + Designed for use with AdvanceCommunicator™ Desktop communications device
- + Provides Push to Talk (PTT) and Microphone on the desktop
- + Sturdy in construction
- + Easy to operate

Gooseneck/Boom Microphone

Part No. ATT8431A

The AdvanceTec Gooseneck / Boom Microphone is designed to be used with the AdvanceTec Hands-Free Car Kit or the AdvanceMobile™ in-vehicle communications system. It is ideally suited for use in buses, trucks, and vans where ambient noise makes hands-free communication difficult, as it brings the microphone closer to the driver.

Features

- + Designed for in-vehicle application
- + Cellular and Push-to-Talk (PTT) functionality
- + Suited to overcome noisy environments
- + Rugged metal construction
- + Can be mounted in multiple places
- + Flexible design enables the driver to position the microphone at virtually any angle with ease



Accessories



Heavy Duty Palm Mic

Part No. ATT8428A

The Palm Microphone is a convenient side-mounted PTT microphone for use with any of the AdvanceTec Hands-Free Car Kits, AdvanceMobile™ and AdvanceCommunicator™. It is compact, robust and lightweight with a coiled cord for maximum convenience.



Privacy Handset

Part No. ATT7107A

The AdvanceTec Privacy Handset with Cradle provides for clear private communication anywhere in the vehicle. When the privacy handset is placed into its cradle, the audio will toggle back to hands-free mode. Plugs into the RJ45 socket on the back of the AdvanceCommunicator™.



Foot Pedal

Part No. ATT8400A

The AdvanceTec Foot Pedal is designed for use with the AdvanceCommunicator™ to provide PTT with the tap of the foot.



In-Vehicle Foot Pedal

Part No. ATT8432A (2 pin connector)

The AdvanceTec In-Vehicle Foot Pedal allows the use of PTT application with the tap of the foot in the vehicle.



MADE IN THE
USA ★



AdvanceTec Industries, Inc.
1150 NW 163rd Drive
Miami, FL 33169-5816 USA

Local and international phone: 305-623-3939
National toll-free: 1-877-881-8211
Fax: 305-623-3996

www.advancetec.com
www.advancemobileGPS.com

GSM14-9